

# **Chapter 1**

## **Getting Started**



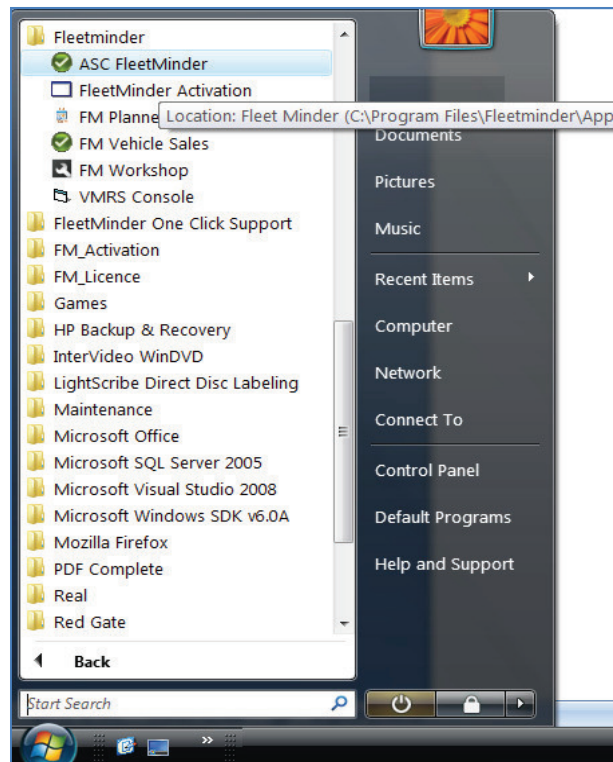
## Starting FleetMinder

To enter **FleetMinder**, double left click the icon on the desktop.



Icon

Otherwise, click on **Start, All Programs, FleetMinder** and **ASC FleetMinder**.

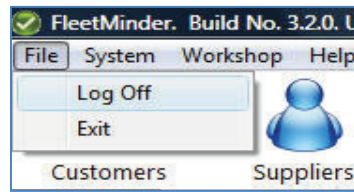


Start Menu

Enter the **code** given to you by your administrator and press **Enter**.

This will identify you on the system and recognise which areas you are authorised to enter.

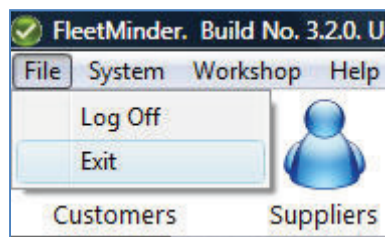
## Logging Out of FleetMinder



Log Off

Click **File** menu.  
Click **Log Off**

## Exiting FleetMinder

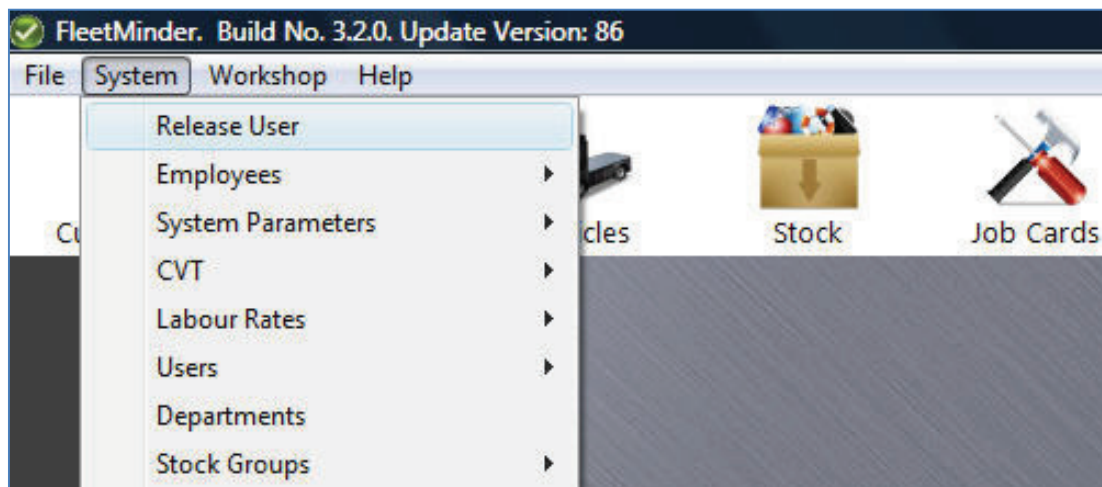


Exit FleetMinder

Click **File** menu.  
Click **Exit**.

## Release the Current User

If the current user is still authorised under the *Timeout for FingerScan / Password* setting, but a different user wants a prompt to be displayed so they can enter a section, you can release the current user on the system by clicking on **System** and then clicking on **Release User**.



Release User

## Fleetminder Activation

Fleetminder uses a licence activation process to allow access per PC. To activate your copy of Fleetminder you need to run FM Activation.

Click **Start**

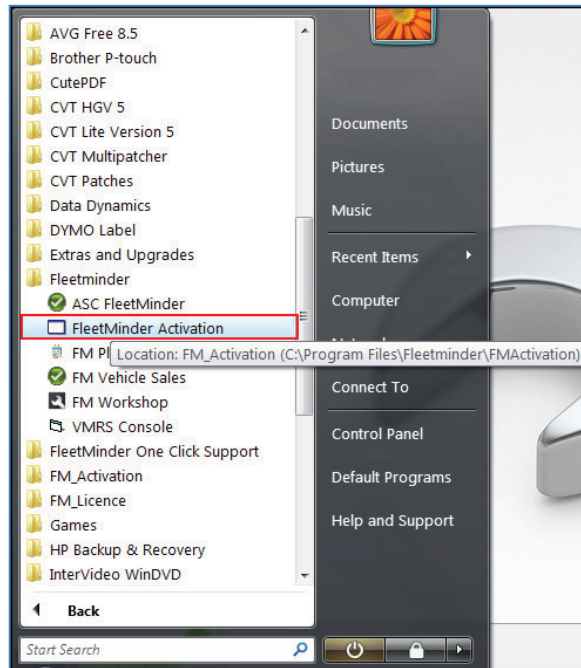
Click **All Programs**

Click **Fleetminder**

Click **Fleetminder Activation**.

Alternatively you can locate this program at.

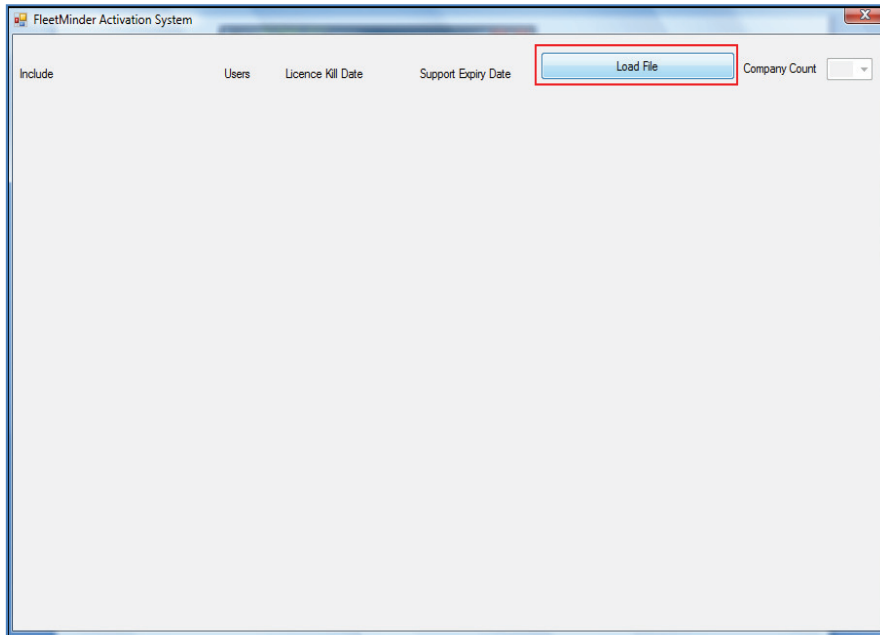
My computer > C: drive > Program files > Fleetminder > FMActivation



**Fleetminder Activation**

In order to activate the PC you need to load the activation licence file.

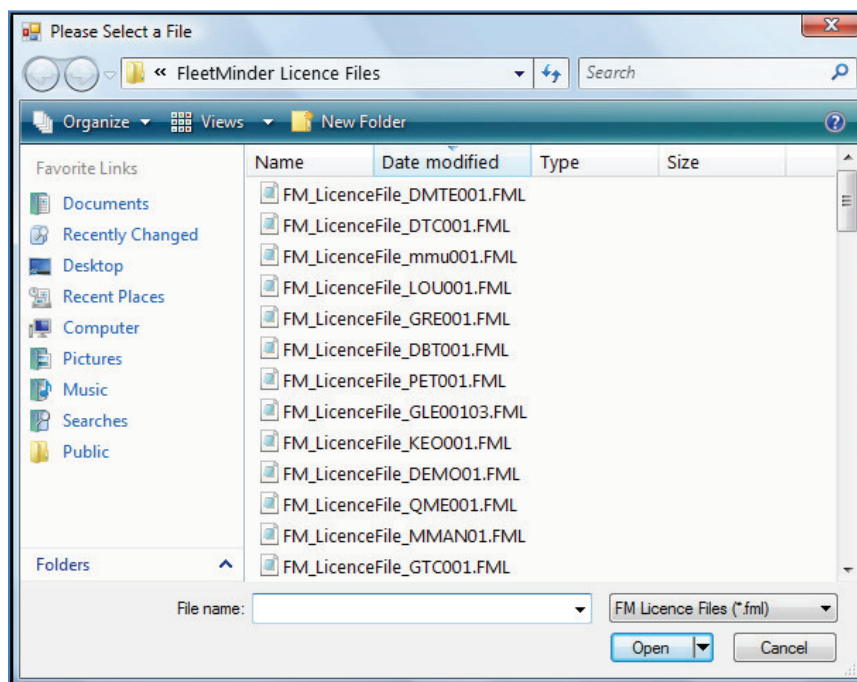
Click on **Load File**



**Load File**


A Search Box will appear where you have to locate your licence file .Select the Licence file (FML).

Click **Open**



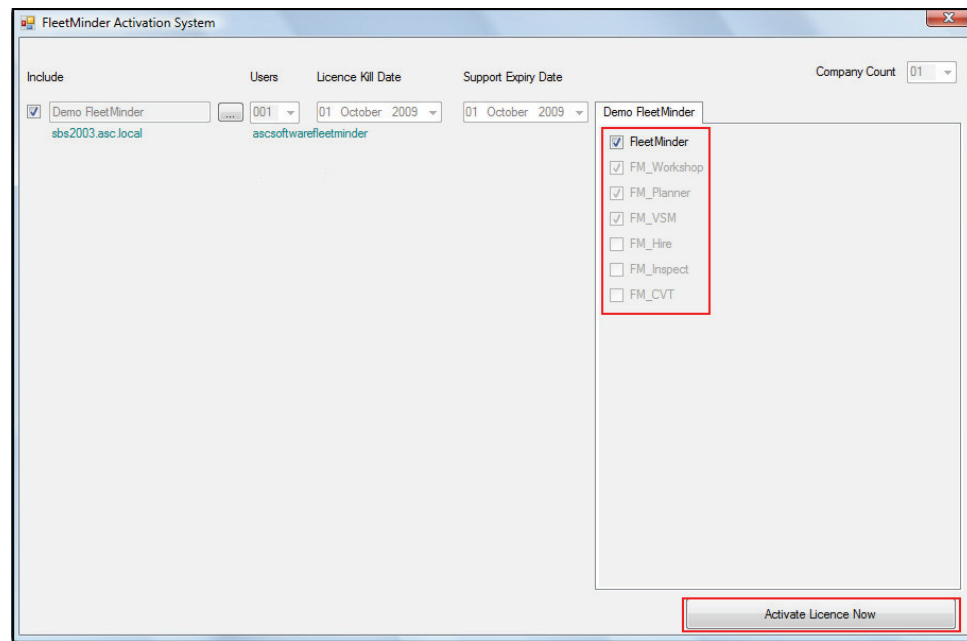
**Load Licence File**

The Fleetminder licence file will open and the below screen will appear. If there are no entries for the server name and database then you will have to enter these.

Click 

You will then be asked for server and database name.

Click **'Activate Licence'**



**Activate Licence**

